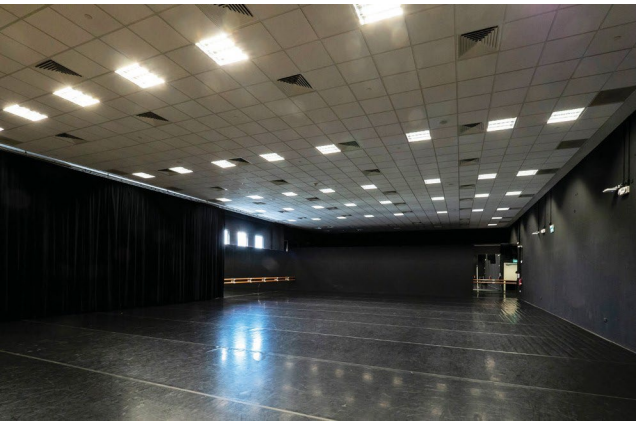


UNIVERSITY CULTURAL CENTRE ANCILLARY FACILITIES



Ho Bee Auditorium / Theatre Foyer

- Versatile space for holding receptions and exhibitions



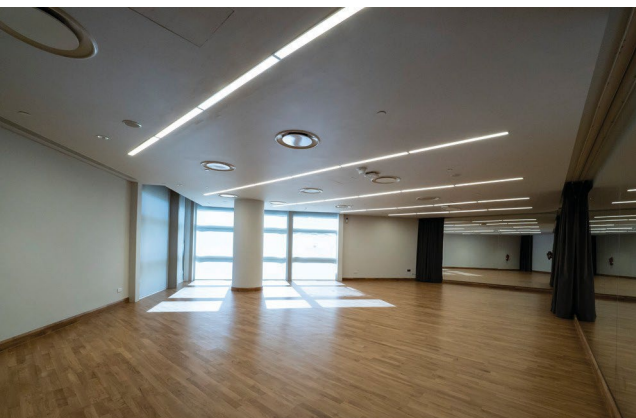
Dance Studio (Level 2)

- Measuring 26m x 15m
- Has sprung timber flooring covering an area of 24m x 15m layered with Jumbo dance mats
- Equipped with built-in ceiling speakers
- Maximum 100 persons



VIP Lounge (Level 2)

- Premium space for VIP holding / reception room with two attached restrooms



Function Rooms (Level 1 & 2)

- Function Room 1 (Level 1) with floor area of 109m²
- Function Room 2 (Level 2) with floor area of 119m²
- Versatile space
- Equipped with mirrors, soundproofing materials and flooring suitable for rehearsals
- Suitable for meetings and presentations. Theatre seating set-up can accommodate up to 50 persons
- Room in default is unfurnished

Rental Rates

HIRE FOR BUMP IN & OUT / SETUP / REHEARSAL / *HOLDING / EVENT

Charges indicated are per 4-hour block. Any extension will be pro-rated on half-hourly basis.

	Rates linked to hire of Hall or Theatre	Others
**Hall Foyers (Per Level) At pre-determined areas	S\$220	S\$800
**Theatre Foyers (Per Level) At pre-determined areas	S\$220	S\$800
VIP Lounge	S\$550	S\$800
Function Room 1	S\$300	NA
Function Room 2	S\$300	NA
Dance Studio	S\$500	NA

***Holding:** Rental applies from 9am until 10pm whenever setup is in place

****Subject to booking of the Ho Bee Auditorium or Theatre for the minimum of one Set-Up / Rehearsal block and one Event block**

Rental includes:

- Air-conditioning

Rental excludes:

- Dressing rooms
- Specialised equipment & any other extra equipment; electricity charges (meter starts from the time of bump-in and will end when the venue has been reset to default).
- Transport charges for manpower at S\$40 per trip per person when staff commences or completes work between 11pm and 7.59am, and any event-related trips between 8am and 11pm.

UNIVERSITY CULTURAL CENTRE ANCILLARY FACILITIES

- Technical manpower charges as follows:

Working Hours	All days except Public Holidays		Public Holidays
	8am–12am	12am–8am	Whole Day
Technical Crew (per hr/person, min. 4hrs call time)	S\$27	S\$42	S\$42

- Crew to be given 1-hr break for every 4 hrs of work; hirers will not be charged for breaks
- Depending on production requirements and with NUS University Campus Infrastructure’s approval, a shorter 30-min meal break may be allowed at the cost of S\$27 per person
- Cancellation charges for crew:
 - 50% of total technical crew charges if written notice is given 4 - 7 working days before first bump-in date
 - 100% of total technical crew charges if written notice is given less than 4 working days before first bump-in date

Other Charges:

- One-time package rate of S\$1,600 cleaning services when hirer books Ho Bee Auditorium, Theatre, Atrium, and both foyers or as and when NUS University Campus Infrastructure deems necessary
- Additional manpower as and when required, chargeable as follows:

Minimum 3-hrs call time	Charges per hour per person
Usher	S\$18
Housekeeping	S\$18
Operation Services	S\$40
Fire Safety Officer	S\$75

All rates are subject to prevailing taxes. NUS reserves the right to amend the above rental rates without prior notice.