

the horti@nus digest

2025

BRINGING NATURE TO LIFE

Welcome to the Horti Digest, a celebration of the vibrant greenery and biodiversity that make our campus come alive. This edition highlights the people and initiatives behind our green spaces. We hope it inspires you to explore, appreciate, and help keep our campus thriving!



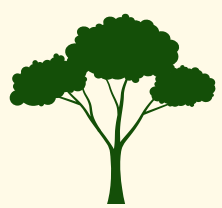
"Through campus greening, NUS aims to create a biophilic and climate-resilient campus that enhances biodiversity, deepens connection with nature, enriching the experiences of our community."

Professor Tan Eng Chye
President, NUS

SHAPING THE GREENEST CAMPUS- ONE TREE AT A TIME

NUS is on a bold mission to plant 100,000 trees by 2030 — contributing 10% to the National Parks Board's goal of one million trees across Singapore!

In 2024 alone, 89% of the trees planted on our campus were native species, chosen not just to support local biodiversity, but also to cool and beautify our campus, celebrating our heritage, and promote mental well-being for all who live, work, and study here.



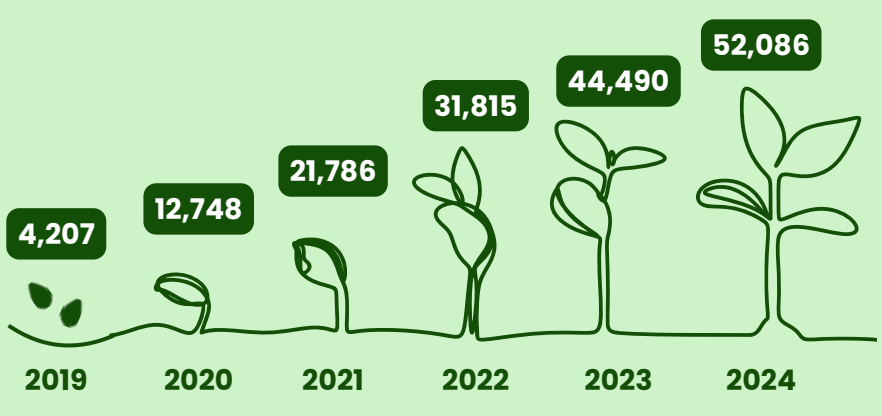
7,596
Trees Planted in 2024



89%
Native Species Planted on Campus in 2024



988
Volunteers Joining Mission Reforesting Our World in 2024



100,000
Trees by 2030

55,221
Trees as of March 2025

Greening Our Campus Together in 2024



RVRC 10th Anniversary



Tree Planting by chESS



Earth Day



DBS Reforestation Project



NUS Plant It Forward Day



Clean and Green Singapore

BUILDING RESILIENT LANDSCAPES IN 2024

In 2024, the **Environmental Enhancement Unit** introduced resilient landscapes across campus, blending beauty with sustainability to create greener spaces that thrive with less.

Discover how we are building resilient landscapes at NUS.



Campus Perimeter Planting along Clementi Road



Landscape Enhancement at Central Library



Native Trees at SDE4



Nature Ways along Kent Ridge Crescent



Slope Protection Planting at Engineering E5



Screening Trees next to Multipurpose Sports Hall 6



Learning Forest at Ridge View Residential College

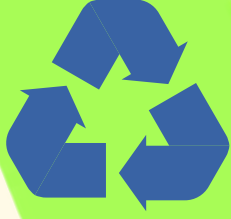


Nature Ways along 6 Kent Ridge Road

Clementi Road Entrance B

Kent Ridge Crescent

Lower Kent Ridge Road



SUSTAINABLE LANDSCAPING



SMART PLANTING



THRIVING GREEN SPACES

ON A MISSION TO NATURALIZE GARDENS: NASI ULAM GARDENS



Translated as ‘herb salad’ in Malay, the 2,500sqm Nasi Ulam Garden serves as a living exploration of alternative landscaping methods for greening urban spaces. Maintained with the support of NUS students, the garden also fosters community involvement and promotes education in sustainable gardening. Together, we cultivate a vibrant space that reconnects people with nature, celebrating local flavours through herbs like ulam raja, turmeric, and kaffir lime.



47 Plant communities

51 Fauna species



Compost made from campus food waste



Repurposed construction slabs for garden access



Selective maintenance to encourage natural growth



Rainwater harvesting to conserve resources



Community engagement and education



Campus in Bloom:

DISCOVER THE FLORA AND FAUNA OF NUS

Our campus is more than just buildings and walkways. It's a thriving habitat for a surprising variety of flora and fauna. Nature is all around us if we take a moment to look. Keep an eye out for the plants and animals featured in this section. You might just spot them on your next walk around campus!



Oriental Magpie-Robin
Copsychus saularis
Carpark 4



Buddha's Lamp
Mussaenda 'Calcutta'
Football Field Opposite UHall



Bread Flower
Vallaris glabra
Ventus



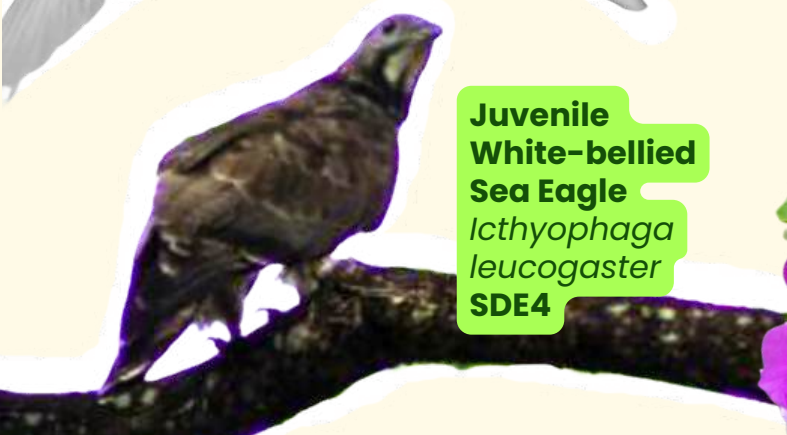
White-crested Laughingthrush
Garrulax leucolophus
Kent Ridge Road



Yellow Saraca
Saraca thaipingensis
SDE4



Crested Cockatoo
Cacatua galerita
The Deck



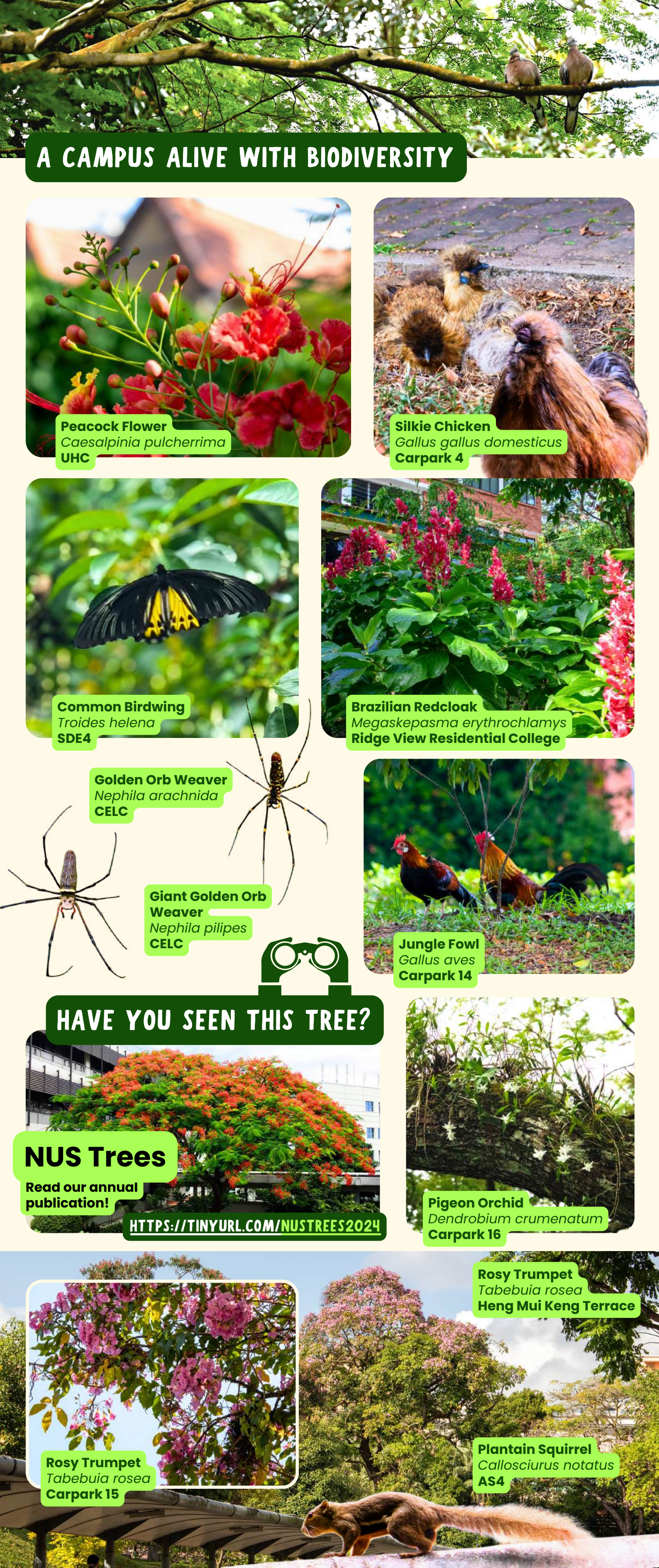
Juvenile White-bellied Sea Eagle
Ichthyophaga leucogaster
SDE4



Oriental Pied Hornbill
Anthracoceros albirostris
SDE4



Garlic Vine
Mansoa hymenaea
AS4



A CAMPUS ALIVE WITH BIODIVERSITY



Peacock Flower
Caesalpinia pulcherrima
UHC



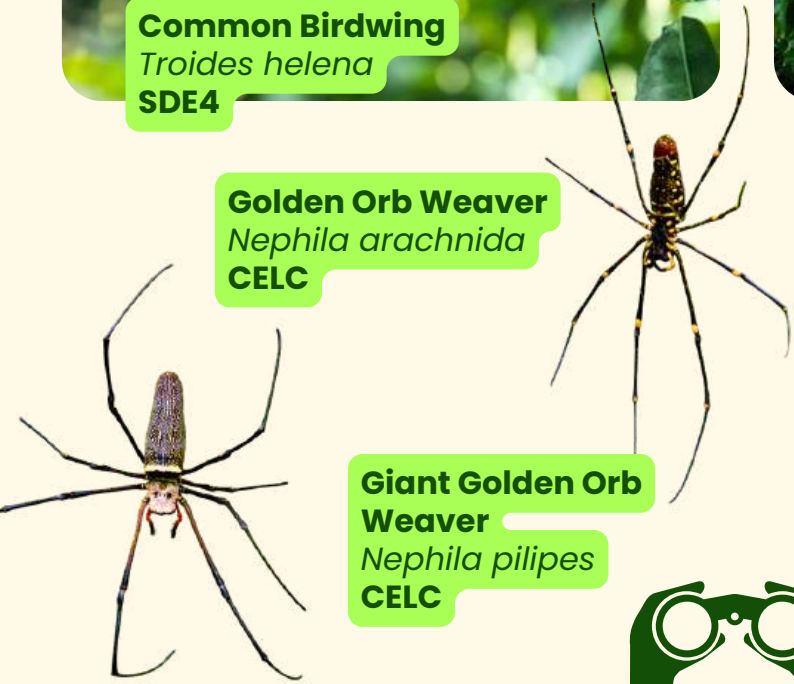
Silkie Chicken
Gallus gallus domesticus
Carpark 4



Common Birdwing
Troides helena
SDE4



Brazilian Redcloak
Megaskepasma erythrochlamys
Ridge View Residential College



Golden Orb Weaver
Nephila arachnida
CELC

Giant Golden Orb Weaver
Nephila pilipes
CELC



Jungle Fowl
Gallus aves
Carpark 14

HAVE YOU SEEN THIS TREE?



NUS Trees

Read our annual publication!

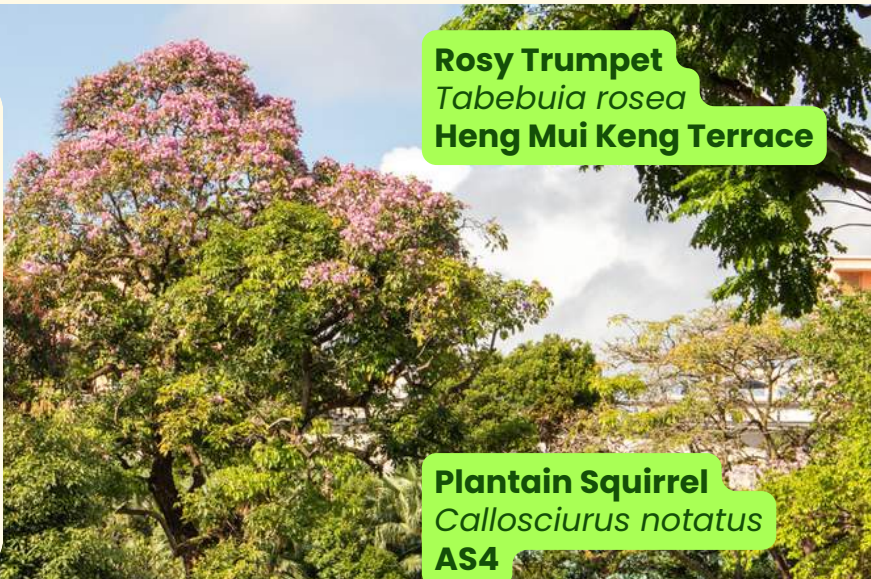
[HTTPS://TINYURL.COM/NUSTREES2024](https://tinyurl.com/nustrees2024)



Pigeon Orchid
Dendrobium crumenatum
Carpark 16



Rosy Trumpet
Tabebuia rosea
Carpark 15



Rosy Trumpet
Tabebuia rosea
Heng Mui Keng Terrace

Plantain Squirrel
Callosciurus notatus
AS4



SHARE YOUR PHOTOS WITH US!

We want to see NUS through your eyes! Send us your photos of NUS flora and fauna and your photos could be featured in our next newsletter!



1. Upload to <https://tinyurl.com/NUSbiodiv>



2. Email achiali@nus.edu.sg with the subject line "NUS Flora and Fauna Photo Submission", including your name, description of photo and where it was taken.

A JOURNEY IN CAMPUS GREENING

Meet Alyssa, a passionate research assistant and NUS Landscape Architecture graduate who has been quietly but powerfully shaping the future of our campus greenery.

"As a Landscape Architecture student, I've spent much time observing the greenery around campus," she shares, "The vertical garden outside SDEI, the undulating terrain, and the mature trees were not only design elements, but key parts of our learning and group discussions."

Her connection to campus greenery grew deeper through "Planting Day" events hosted by the Landscape Architecture Collective at the Nasi Ulam Garden, where students came together to learn, garden, and contribute to an edible landscape.

Now working as a research assistant, Alyssa has a new appreciation for what it takes to sustain our lush campus. "I've become more aware of the effort behind maintaining these spaces, and it's made me think about the environmental trade-offs between manicured landscapes and letting nature take its course."



JOIN US AND MAKE A DIFFERENCE IN 2025!

Be a part of our ongoing journey to green the campus. We're planting **100,000 trees by 2030**, and we'd love for you to be part of it!

**22 April
Saturday**

**EARTH DAY
GREENING**

**21 June
Saturday**

**SUPPORTING
GO GREEN SG**

**16 August
Saturday**

**NATIONAL DAY
PLANTING**

**20 September
Saturday**

**RECESS WEEK
PLANTING**

**15 November
Saturday**

**READING WEEK
GREENING**



WE HOPE YOU ENJOYED READING THIS ISSUE!

A big thank you to the Environmental Enhancement Unit for their efforts in greening our campus!



<https://www.linkedin.com/company/ucinus/>



<https://uci.nus.edu.sg/>

SEE YOU IN THE NEXT ONE!



Shaping Our Campus Together