

APPROVAL HIERARCHY



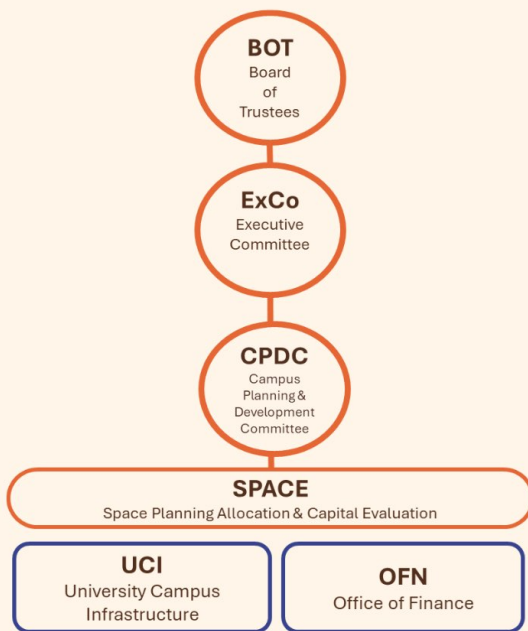
Chaired by NUS President, **SPACE Committee** oversees and reviews **space needs** and **capital investments** in buildings and related infrastructure needed to support the University's strategic directions and initiatives



Along with Office of Finance (OFN), Campus Planning and Management Unit (CPM) plays a vital role as secretariat to the **SPACE committee**, and also provides space planning related **advises and recommendations** to NUS Senior Management

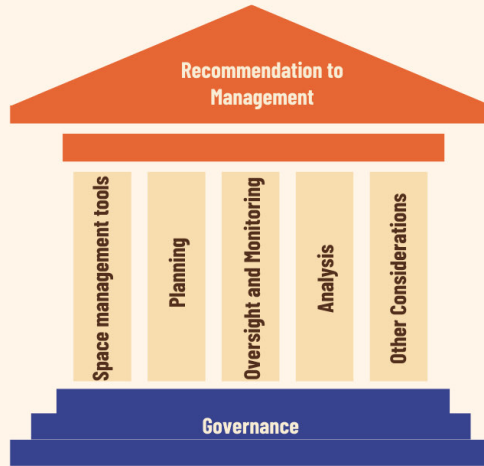


SPACE Committee supports Campus Planning and Development Committee (CPDC), Executive Committee (ExCo) and NUS Board of Trustees (BOT). These Committees are empowered with **funding approval authority** of up to S\$100 million





Robust inventory and active tracking to optimise space planning across the three campuses— Kent Ridge, Bukit Timah, and Outram



Governance

- Space use Policy
- Space planning guidelines
- Signages Playbook
- Master Planning Strategies
- Temporary Occupancy Licenses

Planning

- Space program
- Design brief
- Design Review
- Connectivity

Oversight and Monitoring

- Space audit and verification
- Utilisation reporting
- Annual space review

Other considerations

- Student needs
- Wellbeing
- Sustainability
- Connectivity
- Sustainability
- Faculties
- Emerging research programs