

To: All NUS Students

9 October 2023

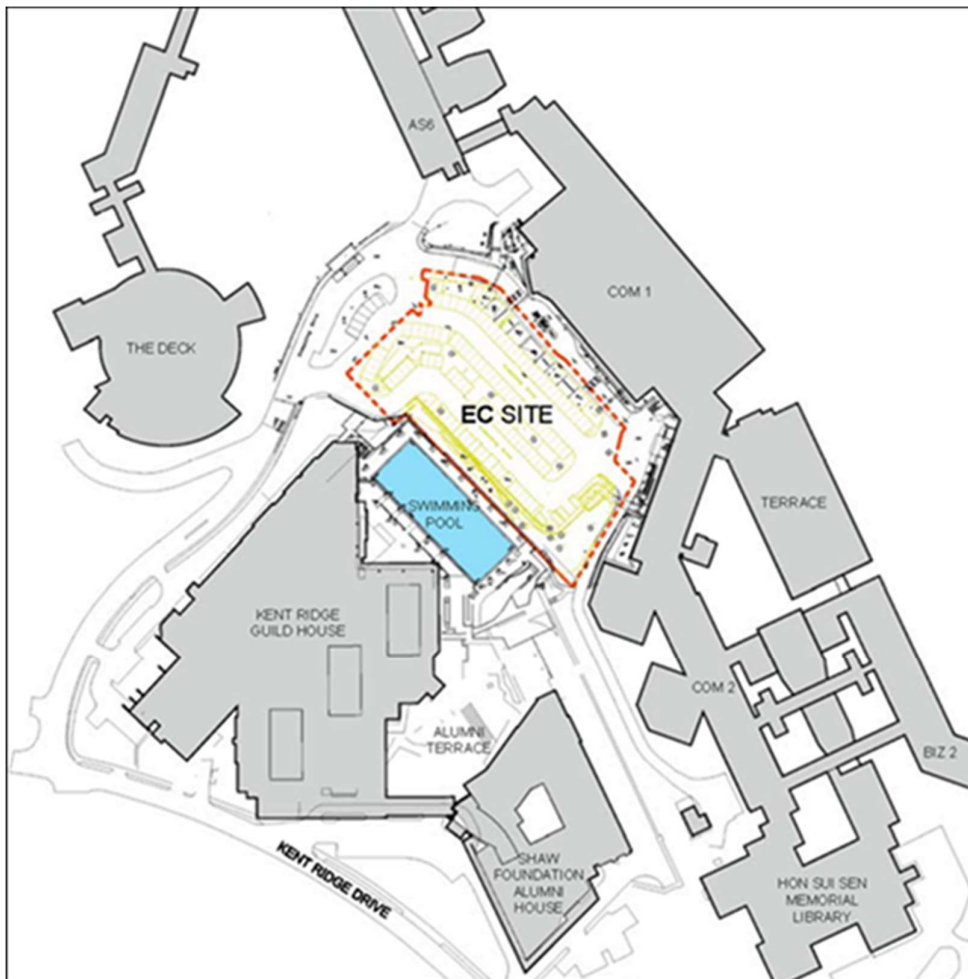
Dear Students

NOTICE – CLOSURE OF CAR PARK 13 AND AMENDMENT OF ISB SERVICES FOR DEVELOPMENT OF EXECUTIVE CENTRE W.E.F. 16 OCTOBER 2023

In preparation for upcoming developments in Car Park 13, the following changes will take effect from 16 Oct 2023, Monday.

1. ISB Services A1, A2, D2 will be amended in the Internal Shuttle Bus Network.
2. Car Park 13 will no longer be available for parking (refer to diagram below).
3. The driveway in front of COM1 and COM2 foyer will be converted to two-way bidirectional traffic flow.

Location Plan



1. Amendment to ISB Services A1, A2 and D2

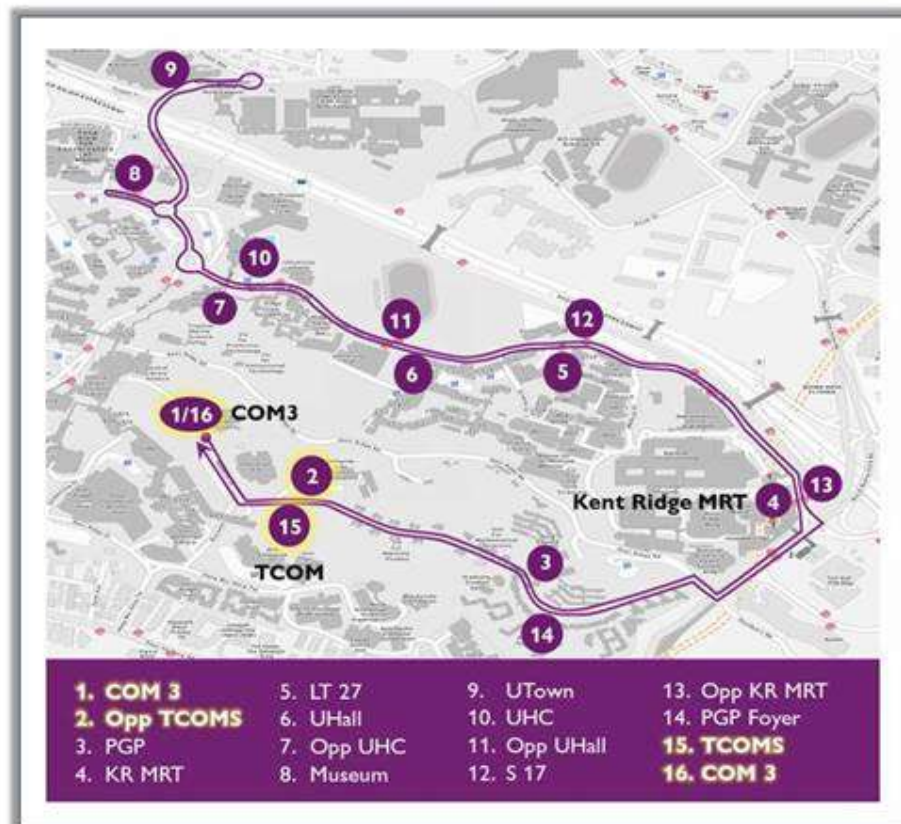
Service D2 will be extended to the COM 3 bus stop, while Services A1 and A2 will not stop at COM 2. These rerouting are made in consultation with the management staff and student representatives from NUSSU, BIZ, SoC and FASS.

- Passengers heading to and from SoC can take the amended Service D2.
- Passengers heading to and from BIZ and FASS can enjoy a shorter and less crowded ride on Services A1 and A2.

Please click on this [link](#) for frequently asked questions on this amendment.

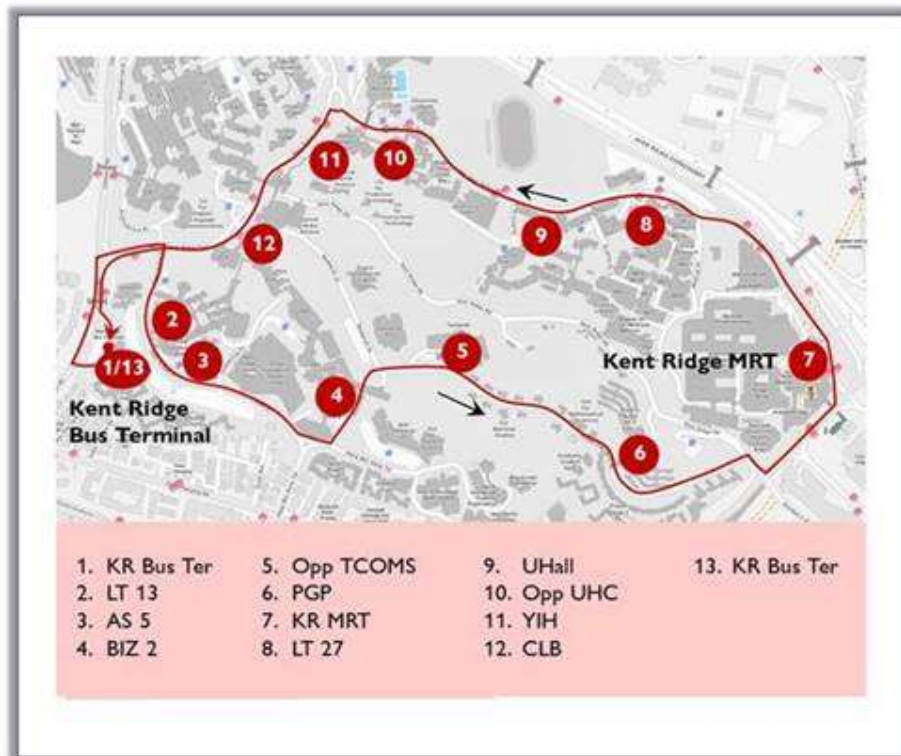
Route Amendment for Service D2

From 23 September 2023, NUS ISB Service D2 will begin and end at the new COM 3 bus stop. It will also stop at TCOMS and Opp TCOMS on Service D2.



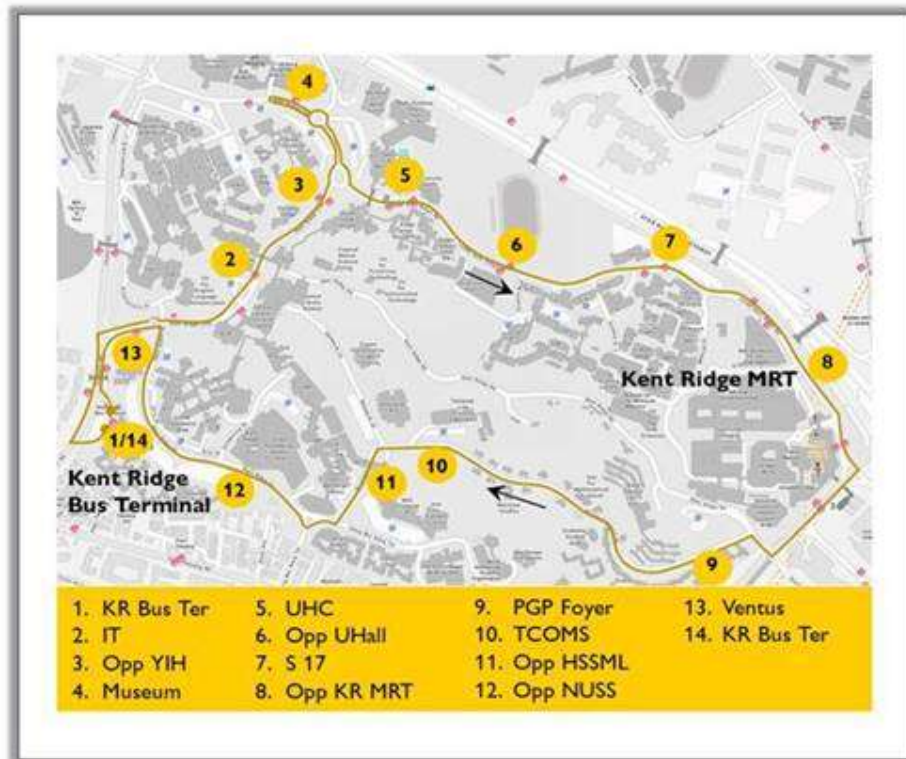
Route Amendment for Service A1

From 23 September 2023, NUS ISB Service A1 will no longer stop at COM 2. Passengers heading from SoC can take the amended Service D2 from the new and larger bus stop area; passengers heading from BIZ and FASS can enjoy less crowded rides on Service A1.

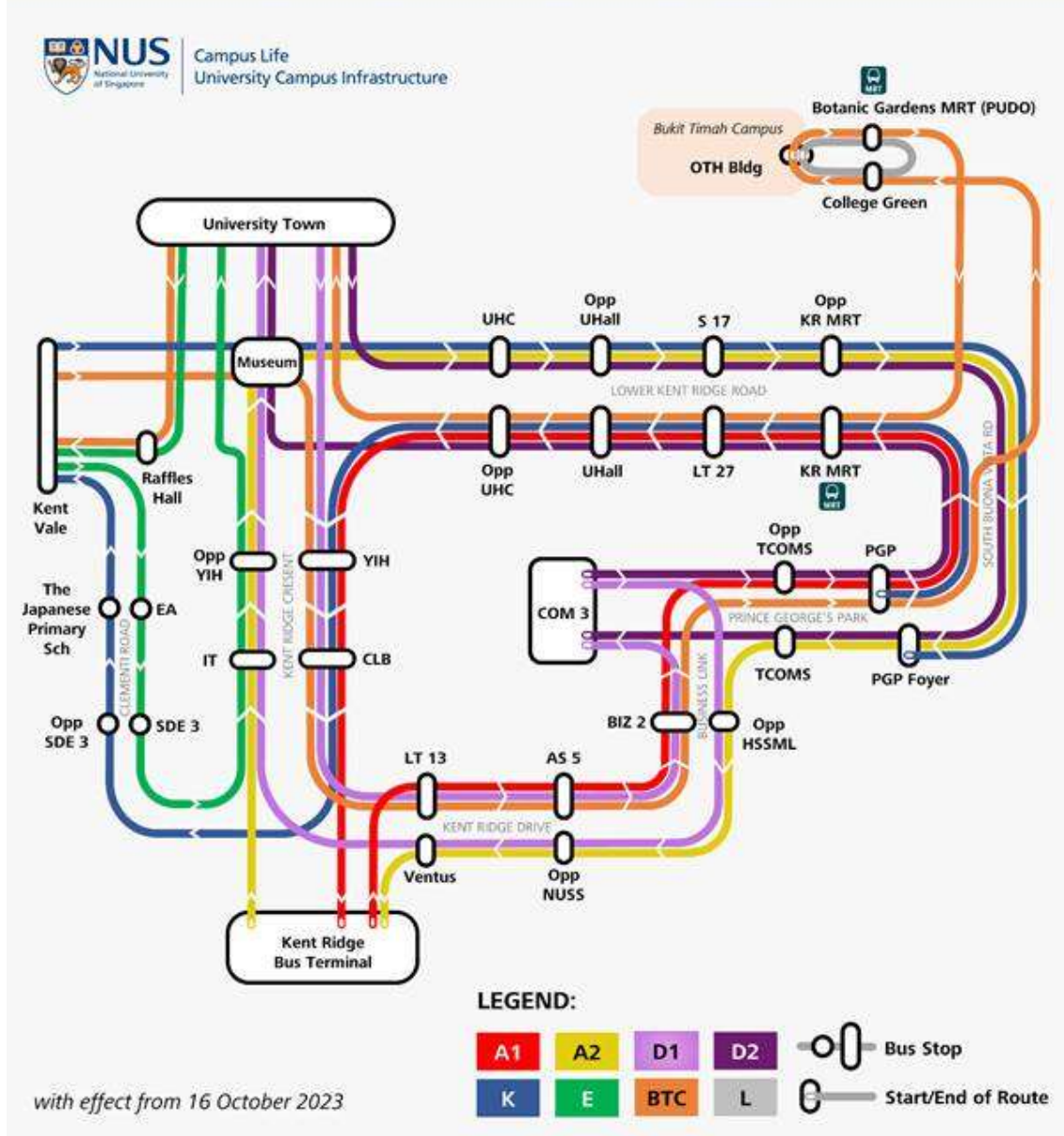


Route Amendment for Service A2

From 23 September 2023, NUS ISB Service A2 will no longer stop at COM 2. Passengers heading to SoC would take service D2 from Opp KR MRT to COM 3; passengers heading to BIZ and FASS can enjoy less crowded rides on Service A2.



NUS Internal Shuttle Bus NETWORK MAP



2. Partial closure of parking lots in Car Park 13

Due to the closure of Car Park 13, please note that alternative parking options are available at the following nearby car parks:

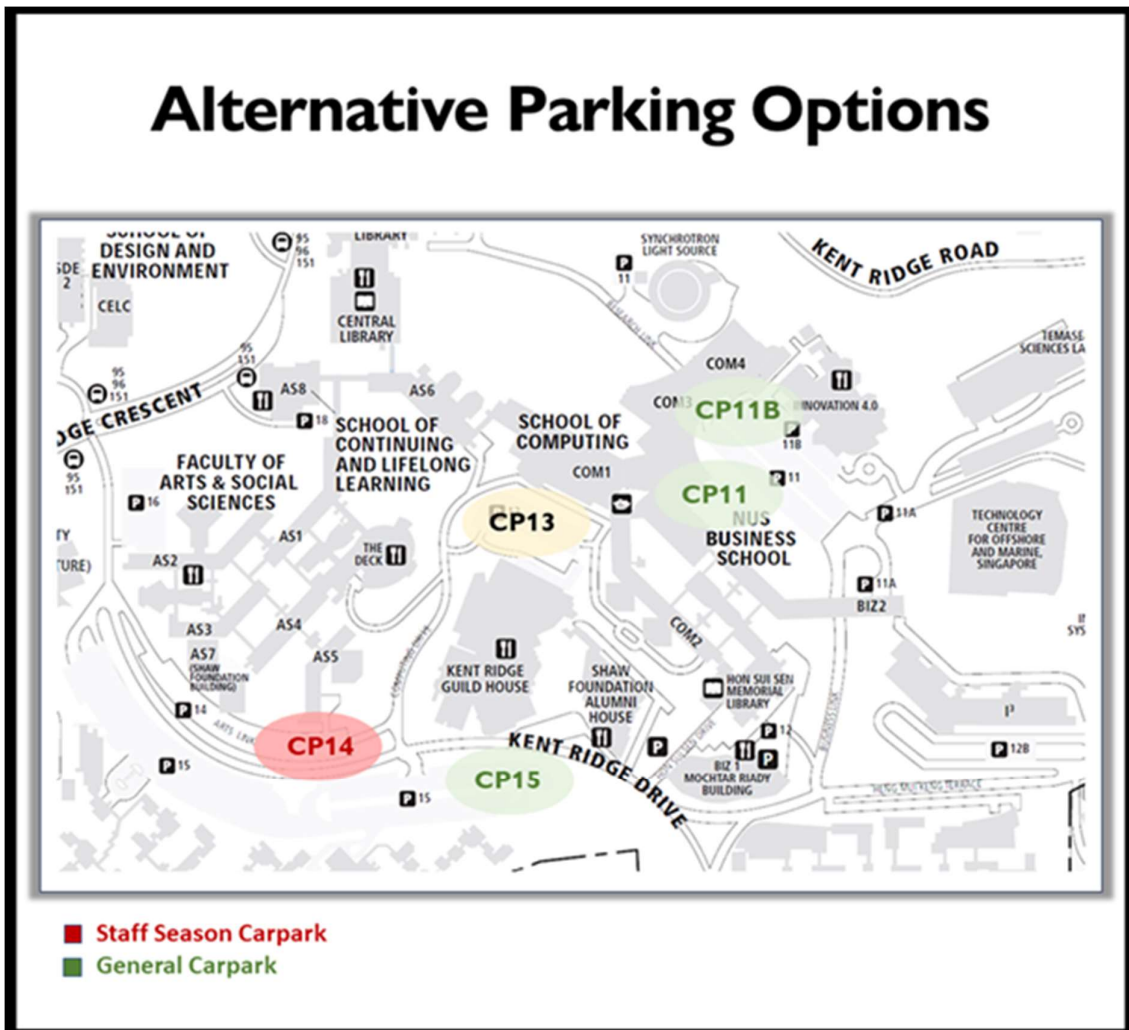
Staff Season Carpark

- Carpark 14 (AS5)

General Carparks*

- Car Park 11 (Between BIZ2 and COM3)
- Car Park 11B (i4.0)
- Car Park 15 (Opposite NUSS Guild House)

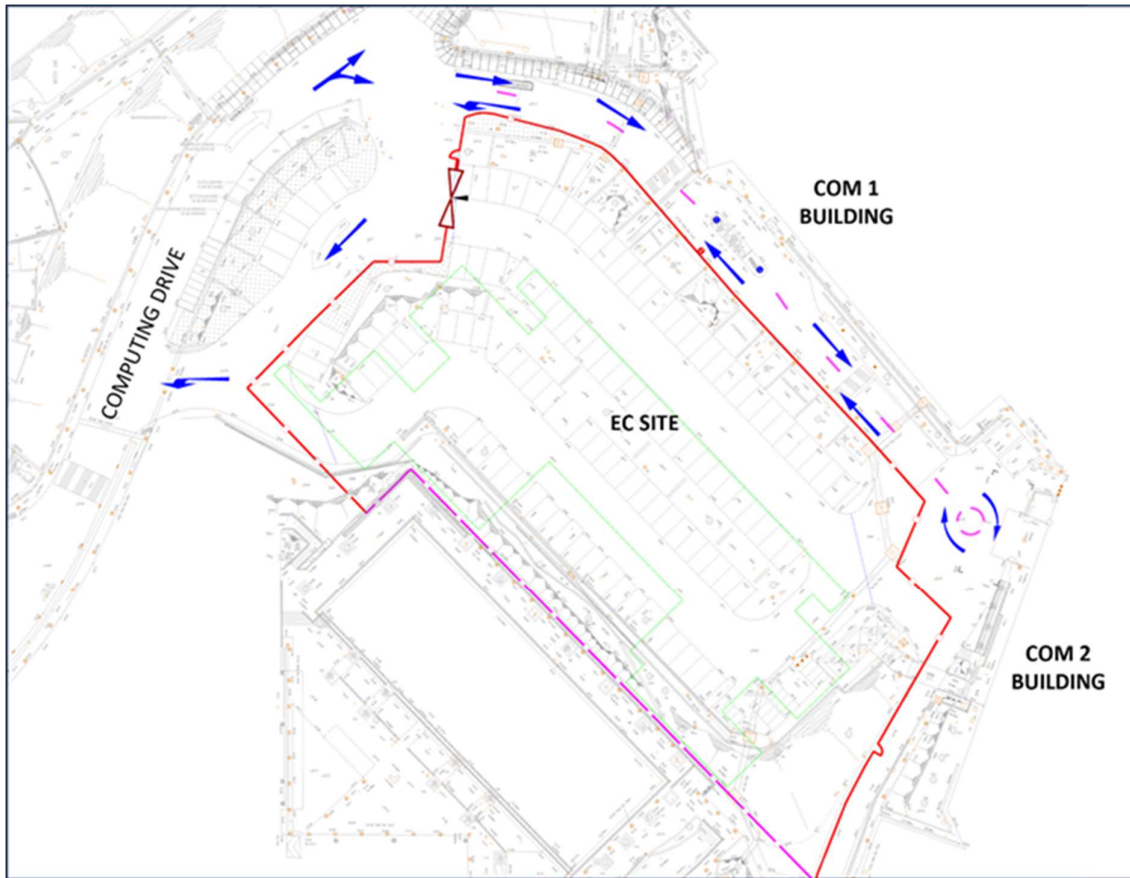
*All visitors & hourly users are reminded to park at the general carparks only. Please note that lots may limited at Car Park 11 and Car Park 11B. More parking lots are available at Car Park 15 (Opposite NUSS Guild House).



3. Conversion of driveway in front of COM1 and COM2 foyer to two-way traffic

Existing driveway leading to the drop-off areas at COM 1 and COM 2 foyers will be converted to two-way bidirectional traffic flow:

- Drivers heading to the respective drop-off areas are advised to adhere to the new directional signages and keep within the demarcated traffic lanes.
- The existing service access and fire engine access route leading to the back of COM 2 building will remain open.



Necessary measures will be in place to ensure that the works are conducted safely and with minimal disruption to the University's operations.

Please contact us at 6601 7878 or email contactuci@nus.edu.sg for assistance, if required.

This circular is jointly sent by UCI Campus Life (Campus Services) and Campus Asset Management.

Thank you.