



NUS University
Campus
Infrastructure
DREAM IT, DO IT.

THE
ins & outs
OF A CAMPUS
LIKE NO OTHER

VISION

Towards a Global Knowledge Enterprise

*A leading global university centred in Asia,
influencing the future*

MISSION

To transform the way people think and do
things through education, research and service

NUS University
Campus
Infrastructure

CLEAR INSIGHT FRESH OUTLOOK

UNIVERSITY CAMPUS INFRASTRUCTURE (UCI),
helmed by the Vice President (Campus Infrastructure),
ensures that infrastructure planning and
development, fund sourcing, operational standards
and facilities management are properly assessed and
implemented to continually enhance NUS campuses.



The UCI cluster comprises the following offices:

- OFFICE OF THE VICE PRESIDENT (CAMPUS INFRASTRUCTURE)
- OFFICE OF ESTATE DEVELOPMENT
- OFFICE OF CAMPUS AMENITIES
- OFFICE OF FACILITIES MANAGEMENT
- OFFICE OF SAFETY, HEALTH AND ENVIRONMENT
- OFFICE OF CAMPUS SECURITY
- UNIVERSITY TOWN DEVELOPMENT
- YALE-NUS COLLEGE DESIGN AND CONSTRUCTION OFFICE

UCI also works closely with Office of Environmental Sustainability to provide lean and green services to the community.

As a cluster, UCI represents the heart and mind of our physical campus. The UCI team ensures that the campus infrastructure supports and augments campus life for everyone. As UCI evolves, so too does the overall university experience. With the improvement of facilities, we enjoy the many benefits of our unique campus – a campus that is distinctly NUS.

Facts and Figures

A leading global university centred in Asia, the National University of Singapore (NUS) offers a distinctive approach to education and research that focuses on providing uniquely Asian perspectives and expertise.

Established in 1905 as a modest medical school in Outram with 23 students, NUS currently comprises three campuses at Kent Ridge, Bukit Timah and Outram. NUS caters to a diverse community of 50,000 of which 38,000 are undergraduate and graduate students from over 100 countries.

TOTAL BUILT-UP AREA (APPROXIMATELY 1.3 MILLION M²)

Teaching and Research: 50%

Communal support facilities: 16%

Research Institutes: 11%

Residences: 23%

HOUSED WITHIN APPROXIMATELY 165 HECTARES OF LAND IN 284 BUILDINGS ARE:

LIBRARIES

- 7 Libraries

RESEARCH INSTITUTES/CENTRES

- 26 Research Institutes and Centres

ARTS & CULTURE

- 2 Museums
- 2 Performing Arts Centre



SPORTS & WELLNESS

- 1 health and wellness centre
- 2 sports and recreation centres that consist of:
 - Multi-purpose fields
 - Netball, Tennis, Volleyball, Handball courts
 - Badminton halls
 - Table tennis
 - Swimming pools
 - Archery range
 - Rock climbing walls
 - Gymnasiums
 - Dance ateliers
 - Dance studios
 - Orchestra practice rooms

STUDENT ACCOMMODATION

- 14 student accommodation options with around 11,000 beds

RETAIL & DINING

- More than 150 food & beverage stalls/outlets
- 5 convenience stores
- 12 retail shops

GREEN SPACE

- 25 hectares of green conservation space
- More than 40,000 trees

AWARDS

- 1st education institution to be awarded BCA Green Mark Champion in 2012
- 1st education institution to be awarded the Eco-Food Court by Singapore Environment Council in 2011
- 1st education institution to be awarded BCA Green Mark District Gold Plus in 2009

The Office of the Vice President (Campus Infrastructure) works towards building a safe, smart and sustainable campus, laying the foundation for the campus of tomorrow through strategic master planning.

Formulated short- and long-term campus development strategies are used to manage space and capital projects. A strategic framework is developed to maximise space utilisation and to set guidelines for the University's space allocation. Design guidelines, policies and implementation strategies are also formulated to ensure projects are aligned with the university's strategic goals in education and research.

Stakeholders and students are deliberately engaged to discover the type of infrastructure improvements that would help them work, live and play in NUS.

Strategic support in human resources, finance, corporate communications and organisational development are also provided by the VP(CI) Office to the rest of the UCI cluster of Offices.

More information about VP(CI) can be found at www.nus.edu.sg/uci.

VP(CI) OFFICE OF VICE PRESIDENT (CAMPUS INFRASTRUCTURE)

Lean and Green

IN-DEPTH EXPERTISE OUTWARD PERSPECTIVES

OED OFFICE OF ESTATE DEVELOPMENT

Creating attractive spaces that inspire and motivate

The focus of the Office of Estate Development (OED) is to create a highly vibrant and comfortable working and living campus supporting the University's evolving research and teaching needs while providing for a rich student experience. OED manages the design and development of new buildings and existing facilities, as well as the construction of major infrastructural works on NUS campuses.

The challenge is the immense scale and diversity of function of the infrastructure required in NUS. Residential buildings, state-of-the-art research facilities, iconic office buildings, sports & recreational facilities, student hubs and activity spaces, museums, performing arts venues, bridges, roads, and green lungs, can all be found in NUS. Designed with sustainability in mind, many of these projects have been awarded Building and Construction Authority's (BCA) Green Mark awards.

More information about OED can be found at www.nus.edu.sg/oed.

WE DEVELOPED

► **12 new buildings** from 2010 to 2013
with a **total GFA of 350,000m²**

WE ACHIEVED

- a **2013 RIBA Award** – International Awards for Architectural Excellence (Kent Vale II)
- **URA Architectural Heritage Awards 2012** for Bukit Timah Campus
- **5 Platinum, 2 Gold Plus and 3 Gold Green Mark Awards** from the Building and Construction Authority



OCA OFFICE OF CAMPUS AMENITIES

Providing amenities to enrich campus life

The Office of Campus Amenities (OCA) actively engages stakeholders to ensure that dining, mobility and lifestyle needs are adequately provisioned to provide for a lively campus for the community.

With a seamless internal shuttle bus transportation network linking different faculties and campuses together with adequate parking facilities, OCA strives to ensure that travelling and parking remain efficient and convenient for the community. In addition, the office also supports the University with logistics services for events and mailroom services.

The overall campus ambience is further enriched by the wide array of interesting retail and dining options, including 24-hour vending machines, service kiosks, and ATMs, available throughout the campus.

More information about OCA can be found at www.nus.edu.sg/oca.

WE MOVE & FEED

► **50,000 persons** around campus

WE PROVIDE

► **1 internal shuttle bus trip**
every **1.5 minutes** per school day

WE SERVE

► **1 meal** every **1.4 seconds**
per school day



OFM OFFICE OF FACILITIES MANAGEMENT

Keeping the campus ticking 24/7

The Office of Facilities Management (OFM) often works behind the scenes to provide a well-maintained, smoothly running campus for the community to enjoy.

In a campus with a large residential community that never seems to sleep, a 24/7 maintenance hotline is available and teams are mobilised as needed, around the clock.

OFM leverages on innovative materials and efficient technologies to meet stakeholders' needs while staving off rising costs. Regular dialogues with industry and government agencies as well as collaborations in research projects keep the staff in tune with best practices.

Green areas are also enhanced and maintained on a regular basis, helping to create a lush and naturally cooled environment.

More information about OFM can be found at www.nus.edu.sg/ofm.

WE MAINTAIN

► **1,300,000 m²** (1.3km²) of
facilities and buildings, almost equivalent
to a small satellite town like Tiong Bahru

► **5,000 matured trees** on campus
in landscaped areas

WE RESPOND

► To **more than 16,000 maintenance service requests** every year



The Office of Safety, Health and Environment (OSHE) is responsible for the development of a positive safety, health and environmental culture by facilitating the development as well as the adoption of safety and health best practices and systems by NUS staff and students.

OSHE is also responsible for emergency management, establishing effective and efficient response systems for incident mitigation and business continuity.

A complete approach to safety begins with risk assessments, and continues with inspections and audits.

NUS staff and students are equipped with the knowledge and tools to efficiently and effectively organise activities and events safely, as well as to manage crisis and emergency situations promptly.

OSHE helps set policies affecting safety, health and environmental management. OSHE conducts training courses, organises promotional programmes and being available for consultations.

More information about OSHE's safety initiatives can be found at www.nus.edu.sg/osh.

OSHE OFFICE OF SAFETY, HEALTH AND ENVIRONMENT

Saving lives, preventing injuries and ensuring business continuity

WE REVIEWED

- ▶ **2,000** research projects annually
- ▶ **1,300** events and activities annually

WE ACHIEVED

- ▶ **"Workplace Safety & Health Award (Silver)"** by Ministry of Manpower in 2006 and 2009
- ▶ **"Comprehensive Safety Management System Award (Merit)"** by Campus Safety, Health and Environmental Management (CSHEMA), USA in 2008, 2011, 2012

WE CONDUCTED

- ▶ **480** fire safety inspections
- ▶ **200** laboratory audits
- ▶ **6,800** occupational health reviews



A safe and secure campus is essential for a thriving global university community. The Office of Campus Security (OCS) is committed to upholding the community's safety through a dedicated team of security officers on campus as well as the involvement of stakeholders.

Security measures and policies for road safety and crime prevention are implemented and regularly updated to ensure a safe environment. The campus has put in place a 24-hour integrated system that encompasses a Command Centre for on-going campus monitoring, security posts, emergency call points and closed-circuit television cameras so that the community can work and play with peace of mind on campus. Patrolling on campus roads are also conducted by the Traffic Management Unit (TMU) to maintain smooth and safe traffic.

OCS also works with Home Team agencies through its Community Safety and Security programmes to ensure that the community receives prompt and appropriate security responses. In addition, OCS actively promotes Crime Prevention through its various talks and programmes to engage the community's involvement to keep our campuses safe.

More information about OCS security initiatives can be found at www.nus.edu.sg/ocs.

OCS OFFICE OF CAMPUS SECURITY

Providing a safe and secure environment for work and study

WE PERFORM

- ▶ **5 types of patrols** around campuses (foot, bicycle, scooter, buggy and car)

WE SERVE

- ▶ **24 hours** and **7 days** in the campus

WE OBTAINED

- ▶ **National Safety and Security Watch Group Award** – Outstanding Individual Award



OES OFFICE OF ENVIRONMENTAL SUSTAINABILITY

Learning and living in harmony with the environment

The Office of Environmental Sustainability (OES) coordinates campus sustainability goals and initiatives that position NUS as a leader in environmental stewardship. We strive for excellence in integrating sustainability into our operations, planning, construction, education, research, instruction and public service. We work to develop positive solutions for today's ecological challenges.

OES has established capabilities to analyse resource usage – in particular, energy and water – on campus, so as to guide decisions on reduction strategies. We also promote recycling and initiate innovative eco-projects related to biodiversity and transportation.

As part of OES’ awareness and outreach efforts to the student community, we created the annual Inter-Hall Environmental Award. The award engages students residing in the Halls to reduce NUS’ environmental impact and in so doing, cultivate environmentally responsible citizens.

OES also represents the university in international sustainability platforms such as the International Alliance for Research Universities’ Campus Sustainability Initiative, and the International Sustainable Campus Network.

More information about NUS’ sustainability initiatives can be found at www.nus.edu.sg/oes.

WE INTRODUCED

- 1 unifying awareness campaign “SustainABLE NUS” to promote campus sustainability

WE ADOPTED

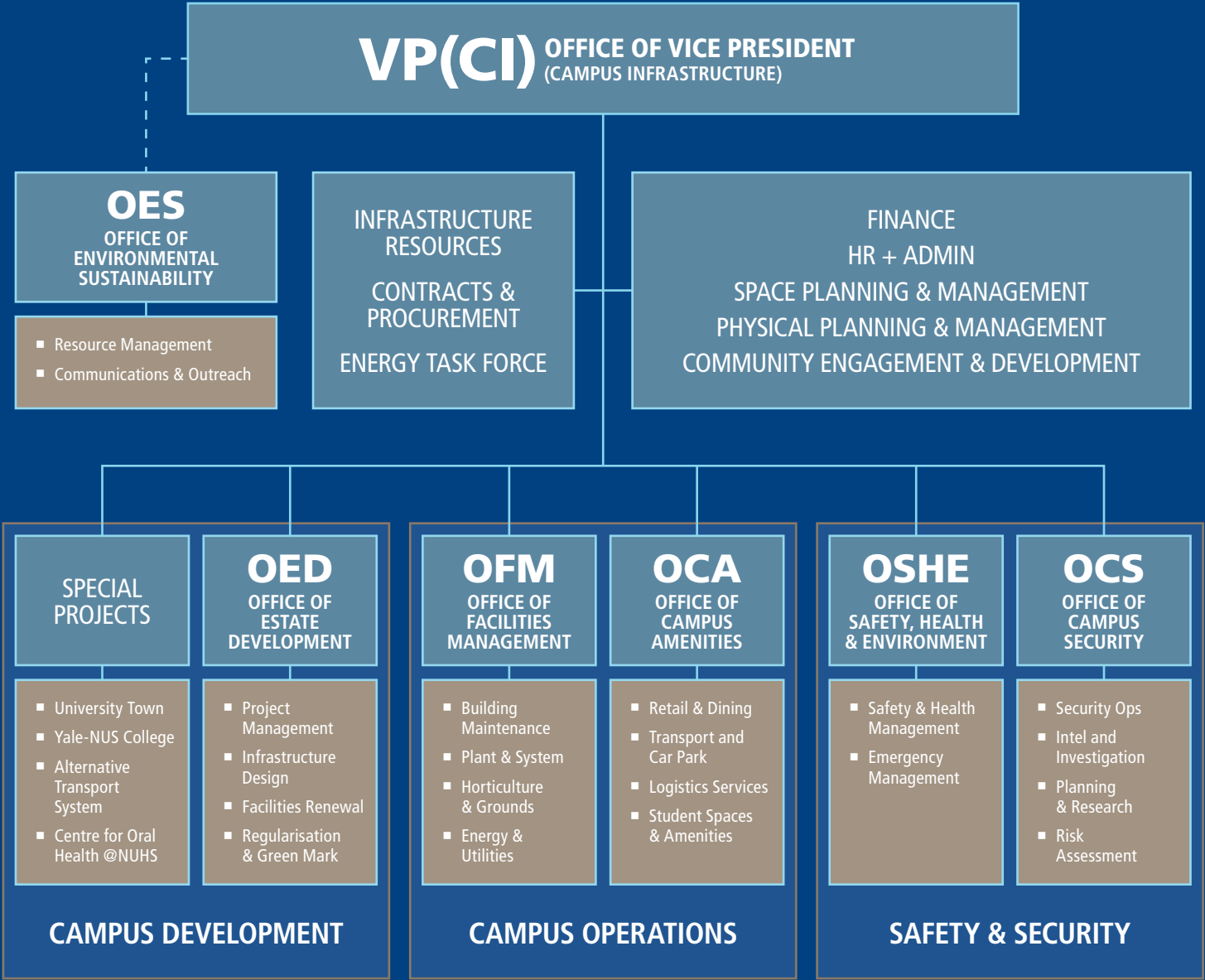
- 2-prong approach towards conserving resources: measure and communicate

WE OBTAINED

- 3 Eco-Food Court certifications by Singapore Environment Council (SEC)

Organisational Structure

OF UCI AND RELATED OFFICES



UTown

LEARNING, LIVING AND DISCOVERY

Yale-NUS College

A COMMUNITY OF LEARNING



PHOTO: LEONG MUN WAI



IMAGE: PELL, CLARKE, PELL ARCHITECTS

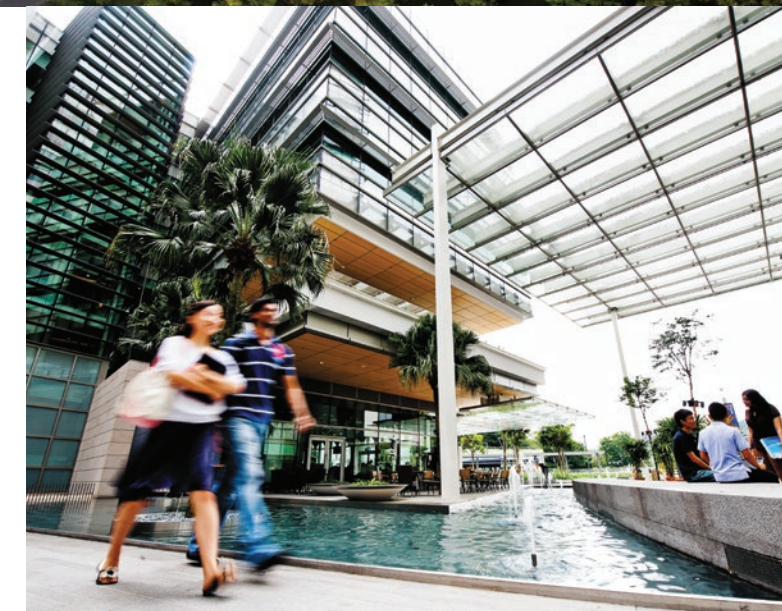
University Town, fondly referred to as “UTown” by the community, is a 19-hectare integrated campus integrating academic, performing arts, and sports facilities, research labs as well as a large residential community. UTown is the place for transformative education enhancing the innovation and vibrancy of our community.

Developed with environmental and human values in mind, UTown is one of only four Green Mark Districts in Singapore, realising NUS’ move towards an environmentally sustainable campus.

Located adjacent to UTown is the site of the Yale-NUS College which is expected to be completed in early 2015.

Featuring three residential colleges, each with their own character, dining hall, common room, student cafe, classrooms, and student activity spaces, the Yale-NUS College will also have a performance hall, sky gardens, science labs and classrooms.

The Yale-NUS College Design and Construction Office (DCO) became part of the UCI cluster in May 2013 and oversees the design and construction of the College.



**PITCHING IN
TOGETHER
WORKING OUT
SEAMLESSLY**



UNIVERSITY CAMPUS INFRASTRUCTURE (UCI)

Ventus, 8 Kent Ridge Drive
Singapore 119246

Tel: (65) 6516 1515 Fax: (65) 6778 6031

www.nus.edu.sg/uci

January 2014

