

Species of the Month 01/2018 || Branded Imperial

31 January 2018 || TO NUS Community

NUS Students Against Violation of the Earth (SAVE) and the Office of Environmental Sustainability present “Campus in a Tropical Rainforest”, an initiative that aims to create awareness of the biodiversity that surrounds us in NUS. In each monthly issue, we will be featuring a species that can be spotted or found in NUS to help us get to know them better. So, if you happen to be travelling around campus between classes, remember to stop and look around your surroundings, for you may be surprised to come across some of the other inhabitants of NUS.

NUS SAVE PRESENTS:

Campus In a Tropical Rainforest

SPECIES OF THE MONTH

ISSUE #24: JANUARY 2018

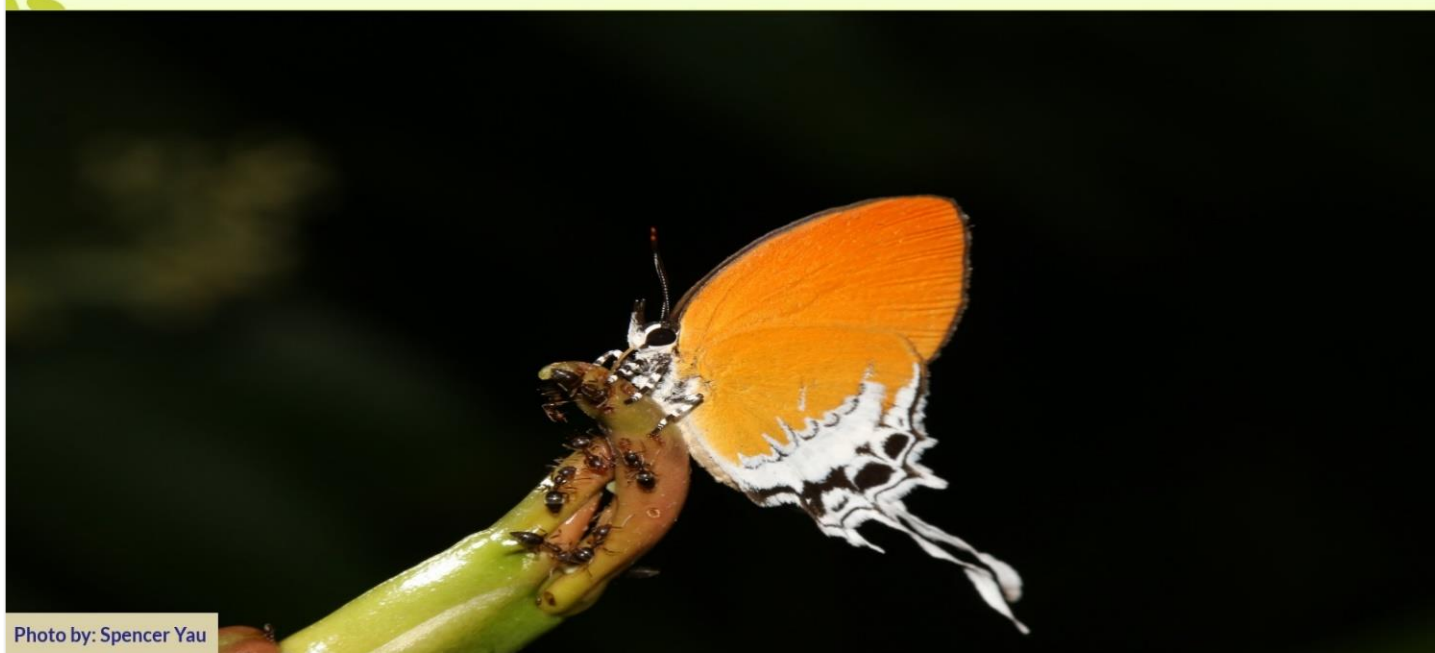


Photo by: Spencer Yau

Branded Imperial

Species: *Eooxylides tharis*

Family: Lycaenidae



Appearance

- The Branded Imperial has distinctive extensions from its hindwing
- When closed, the reddish orange underside of its wings is visible but when open, the dark brown upper side is revealed
- This butterfly species can be distinguished from other similar-looking species by its black spots and striped legs



Habitat

- This butterfly species is commonly encountered in forest pathways, particularly on its caterpillar host plant, the Bearded Smilax vine



Diet

- While the caterpillars of this butterfly species devour plant fibre, the adults use their tube-like mouth to sip various liquids including plant sap and bird droppings



Fun Facts

- The caterpillar of this butterfly species forms a close relationship with ants - the caterpillar secretes a nutritious, sugar-rich sticky liquid known as honeydew. In exchange for the sweet reward, the ants provide the caterpillar protection from predators and parasitoids.
- Once it settles at a feeding spot, this butterfly species is unlikely to leave, even with a human in front of it

Initiative by:



Supported by:



Check out other sightings of NUS biodiversity on the Campus Creatures Facebook page:

<https://www.facebook.com/campuscreatures/>

You can also join the community in spotting the flora and fauna in NUS by sharing your sightings with pictures on the Campus Creatures Facebook page and Instagram the photos with #NUSCiTR and #NUSbiodiversity.